

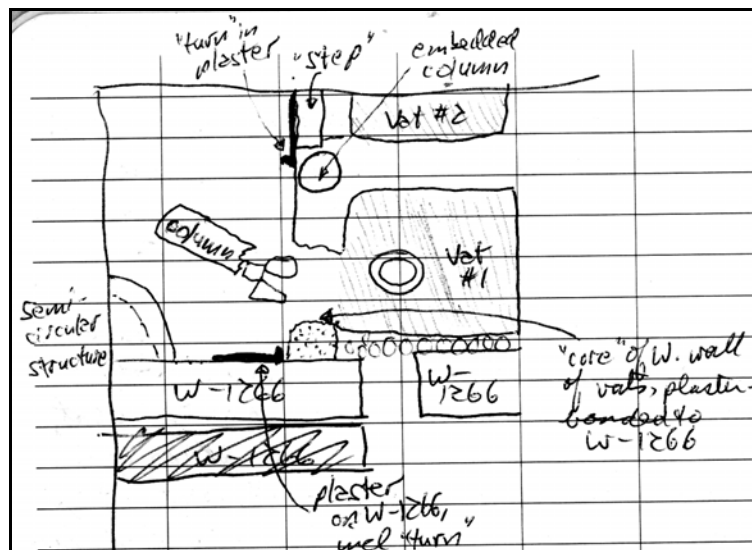
Hippos (Sussita) Excavations 2010 – 11th Season Daily Log + Drawing

Date: 15 July 10 Area: NEC Manager: Schuler

Squares	XXYY99	YY/ZZ1/2	YY/ZZ4	YYZZ01	
Loci	1226 1905 1907	1226 1908	1906	1226	
Baskets	2349 2350 2354	2352 2355	2353	2351	
Walls	W1261, W1266, W1288, W1236, W1297, W1298, W1902, W1903, W1904				
Floors	F1294, F1909				

- Continued work in XXYY99
 - Goal = Searching for intersection between W1266 and north to south wall on west side of putative street.
 - Starting elevation = 130.580, 129.804 (southern vat), 130.120 (top of cistern head in vat), 130.794 (step? next to north vat), 130.997 (top of W1266)
 - Ending elevation = 129.752 (floor of south vat), 130.506 (top of [semi-] circular fixture/catch basin for cistern?), 131.257 (top of floating wall W1288) in north balk), 130.212 (top of cistern)
 - Soil is Horizon B
 - The plastered floor of the southern vat has been reached. Sifting of contents of the south vat revealed a dozen olive pits.
 - The hour-glass mill sits on the floor of the southern vat, likely pushed there by the fallen column removed from above it.
 - A rounded fixture is in the NE interior corner of the intersection of W1266 and the west balk. It may be a catch basin.
 - There is evidence of the floating wall (W1288) in the north balk. The pieces align with material seen in ZZ99 previously.

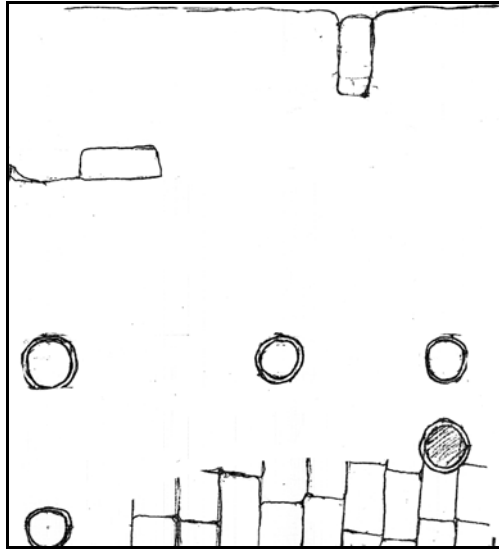
- The “step” leading into the northern “vat” from the west is now seen to be an external wall of that structure
- A cistern was discovered just west of the south vat. A tape measure showed a depth of at least 4.5m.
- We surmise that the hour-glass mill was used secondarily as the head for the cistern. An earthquake toppled the second column from the east along the line of the stylobate in ZZ99 (assuming six columns from east to west). That falling column broke the west side of the vat and pushed/toppled the mill into the vat, where it was recovered.
- A column is visible in the plaster/wall separating the west end of the two vats. This column may be the first of six in the earlier colonnaded building. The second tumbled and broke the south vat. The vats were built on fill covering the earlier colonnaded building. The cistern was dug through the fill and through the floor (F1294) to bedrock.



- Basket 2350 is from Locus 1905. That locus is vat for olives in square XXYY99. In general, the contents are small shards of Byzantine cooking ware and few of Beisan jars, dating from 500 AD until 700 AD. Indicative types are 1 ARS. Residual types are 1 Early Roman jar rim.
- Item: 494. Description: partial grinding bowl with 1 foot and part of the rim are visible (17 cm diam at widest, 14 cm diam at narrowest, 4 cm wide, 8.5 cm

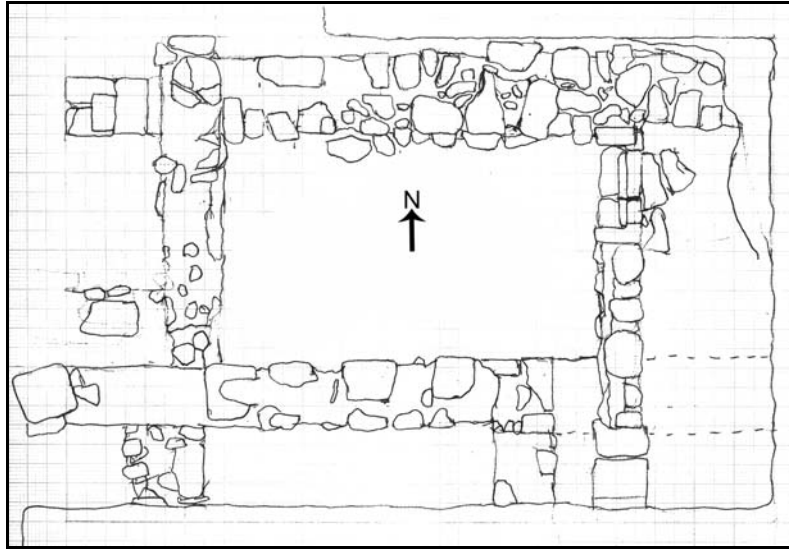
from base of foot to rim) revealed 266 cm west of w1298, 120 cm north of w1266, 176 cm from surface.

- Continued work in square YZZZ0/1
 - Goal = Expose rest of the paved plaza east of the church
 - Starting elevation = 130.919
 - Ending elevation = 130.635 (second column from south), 130.773 (column at north end of stylobate)
 - Soil is Horizon B/C
 - Discovered a 17.5cm dagger near the south balk.
 - A second column to the east of the column on the north stylobate was discovered. It aligns with the second column on the south stylobate and with the corner of that stylobate.
 - Began bringing down balk between YZZZ01 and YZZZ12
 - Revealed two more columns between the easterly columns on the north and south stylobates. The northerly one is tipped in the fill to the west.
 - Intercolumniations clarify the east side of the paved plaza yet to be fully revealed. On the south stylobate, the intercolumniation is 2.02m. The east column is 41cm in diameter. The intercolumniation with the next column to the north is 1.61m. That next column is 40cm in diameter. The third column from the south on the stylobate is tipped. But the intercolumniation between the second and fourth columns is 3.55m. Assuming a column of 40cm in between, the remaining intercolumniations would be 1.57m.



- Basket 2351 is from Locus 1226. That locus is the middle of peristyle court above the pavement. In general, the contents are fragments of Beisan jars and BYZ cooking pots, 1 AMP, pipes' fragments, dating from 450 AD until 650 AD. Residual types are 1 ROM.
- Item: 490. Description: dagger (overall length 17.5 cm, overall width 3.0 cm, width of tang 18 mm, length of tang 2.5 cm) discovered 740 cm east of w1267, 90 cm north of (north half of) yy 1, 98 cm from surface.
- Item: 491. Description: an iron ring with a nodule attached to one side, resembles a small door knocker (6-7 cm wide on outer ring, 4.5 cm wide on inner ring, 2.5 cm thick) retrieved 845 cm east of w1267, 170 cm north of (north half of) YY1, 95 cm from surface.
- Continued work in Square YY/ZZ1/2
 - Goal = Follow W1261 and south stylobate of paved plaza to the east.
 - Starting elevation = 130.695 (fill), 130.499 (threshold of doorway in W1261), 130.048 (east side of stylobate), 130.457 (cistern head),
 - Ending elevation = 130.452 (top of collection basin next to W1261), 130.548 (average of remain fill)
 - Soil is Horizon C
 - The doorway in W1261 is 1.07m wide. The door would have been 1.22m and would close from the south. The west edge of the door is 5.05m from W1267.

- A catch basin was discovered to the east of the doorway in the NE interior corner of W1261 and the pilaster/wall. Plastering on the wall and drain tiles in the fill suggest that the basin captured water from the room of the building to the south.
- Basket 2352 is from Locus 1226. That locus is S. part of peristyle court. In general, the contents are large pieces of Beisan jars and many fragments of pipes, dating from 450 AD until 600 AD.
- Basket 2355 is from Locus 1219. That locus is Peristyle court - expansion of excavations to E. side. In general, the contents are more pipes, dating from 450 AD until 600 AD.
- Item: 492. Description: four marble cornices (piece a: 12.5 cm x 5 cm x 5.5 cm (1 rib); piece b: 14.5 cm x 5.5 cm x 6 cm (protruding upper lip, 1 groove); piece c: 8 cm x 5 cm x 6 cm (1 rib); piece d: 11 cm x 4 cm x 10 cm (3 grooves)) discovered 395 cm north of w1261, 280cm from east balk, 110 cm from surface.
- Item: 493. Description: marble cornice (length 15.5 cm, width 4.5 cm, height 6.5 cm) discovered 385 cm north of w1261, 223 cm from east balk, 89 cm from surface
- Continued work in Square YY/ZZ4
 - Goal = Follow W1288 and W1236 to east and clarify temporal relationship.
 - Starting elevation = 130.840, 131.042(?) (courtyard east of threshold), 131.000 (threshold in W1904), 130.823 (flat stone, possible level of floor)
 - Ending elevation = 130.823
 - Soil is Horizon C
 - Doorway in W1904 is 77.5cm wide and was closed by a 90cm door. Its opening is 30cm from the wall to the south.
 - Leveled room at a likely floor (mud/plaster with some stones).
 - Sifted the last several centimeters to no avail.



- Basket 2353 is from Locus 1906. That locus is A room in square YYZZ4. In general, the contents are large pieces of Beisan jars, some cooking ware, a partially restorable AMP, dating from 350 AD until 600 AD. Residual types are a few Early ROM.
- Continued conservation of plaster in ZZ99