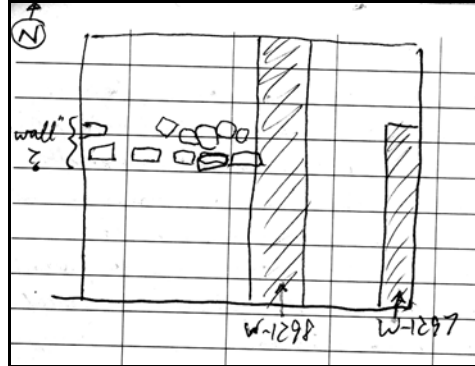


Hippos (Sussita) Excavations 2010 – 11th Season Daily Log + Drawing

Date: 06 July 10 Area: NEC Manager: Schuler

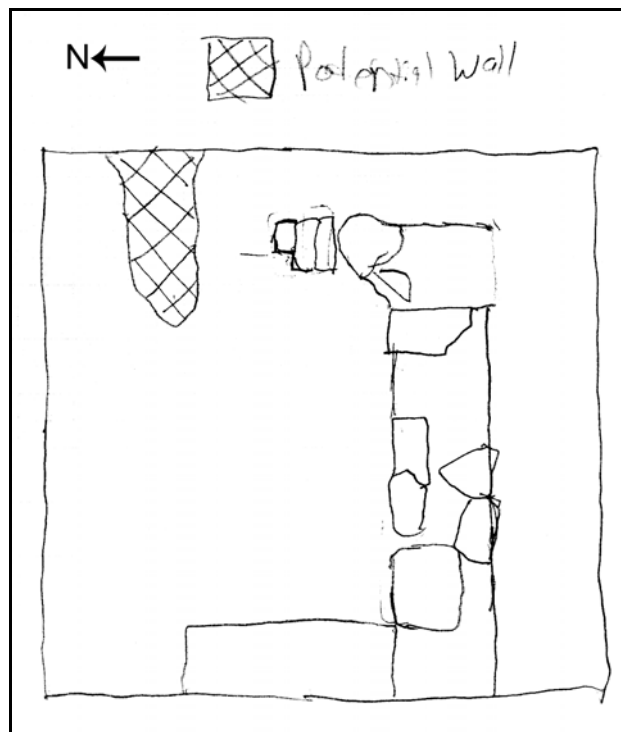
Squares	XX99/0	YY/ZZ1/2	YY/ZZ4	ZZ99	
Loci	L1219 L1226	L1219	L1226	L1299	
Baskets	2318 2315	2316	2317	2314	
Walls	W1261, W1266, W1288, W1236, W1297, W1298				
Floors	F1294				

- Continued work in Square XX99/0
 - Goal = Searching for intersection between W1266 and north to south wall on west side of putative street.
 - Starting elevation = 131.718 (average east of W1298), 131.966 (average west of W1298), 132.181 (top of W1298)
 - Ending elevation = 131.705 (average of Cardo 4N), 131.453 (average SW quadrant), 131.526 (average NW quadrant)
 - Soil is Horizon B
 - Leveled remainder of alley to match previous work.
 - Removed some 60 cm of fill west of W1298.
 - Painted plaster has emerged on the inner (western) face of W1298 at the north end of the square. Some fragments have dark red paint and other have yellow.
 - There may be an east to west wall going west from W1298. A southern face may have been established but the northern face is still TBD.



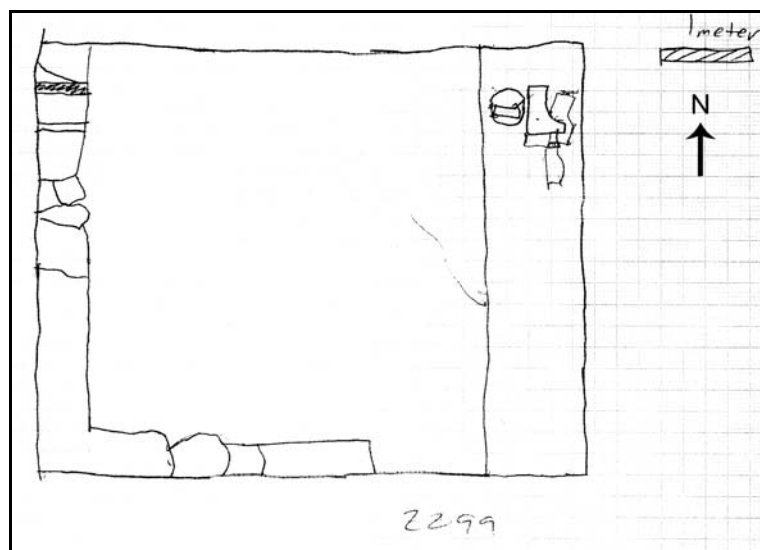
- Basket 2315 is from Locus 1226. That locus is mixed topsoil after tractor. In general, the contents are very small shards, mixed material from different periods, dating from 450 AD until 700 AD. Indicative types are LRC.
- Basket 2318 is from Locus 1219. That locus is mixed topsoil after tractor. In general, the contents are small shards; mixed material from different periods, dating from 100 BC until 700 AD.
- Continued work in Square YY/ZZ1/2
 - Goal = Follow W1261 and south stylobate of paved plaza to the east.
 - Starting elevation = 131.775 (W1261), 131.577 (average)
 - Ending elevation = 131.534 (average low), 131.625 (average high)
 - Soil is Horizon A/B
 - Exposed top of W1261 to the east end of the square.
 - Cleared area south of W1261 in square to expose some of the south side of W1261 (about 40 cm)
 - Continued to remove heavy fill north of W1261.
 - A large (approx 1 m) broken auger is embedded in the fill (modern).
 - Basket 2316 is from Locus 1219. That locus is the second day working the top layer. In general, the contents are large pieces of Beisan jars; material looking clean BYZ, dating from 500 AD until 750 AD. Indicative types are LRC.
 - Item: 406. Description: a small smoothed stone that is roughly the size of a quarter. It was found on w1261 but probably came from the soil just to the north of that wall in the yy2 section. 2.5 cm around.
- Continued work in Square YY/ZZ4

- Goal = Follow W1288 and W1236 to east and clarify temporal relationship.
- Starting elevation = 132.518 (west, low), 132.916 (west high), 132.629 (east average), 132.820 (south average)
- Ending elevation = 132.517 (average north of W1236), 132.924 (ashlar at east end (?) of W1236).
- Soil is Horizon B
- Area remains quite confusing. Several lines of stones thought to be walls (possibly) turned out not to be.
- W1236 seems to stop with ashlar 2.1 m from the east end of the square
- Some kind of fixture abuts the wall 1.2m from the east edge of the square. More clearing is needed to understand what it is.
- A single row of stones at surface level going south from W1236 at the west edge of the square was removed.
- A more substantive wall can be seen going south from W1236 just to the east of the floating wall.



- Basket 2317 is from Locus 1226. That locus is second layer above the wall level. In general, the contents are Beisan jars, some cooking wares, dating from 500 AD until 700 AD. Indicative types are CRS; LRC.

- Continued work in Square ZZ99
 - Goal = Expose rest of square to see stylobate and perhaps a bit of the floor to the north of the stylobate.
 - Starting elevation = 129.041
 - Ending elevation = 129.072
 - Soil is Horizon B/C
 - Leveled the square to the height of the benches. A soil changes to a more grayish color occurs at that level.
 - Encountered a pottery dump (mostly fragments of Beisan jars) 216 cm below the surface. It is about 120cm wide and 50 cm deep. Its northerly extent is uncertain. Four buckets of pottery sherds were extracted for analysis.
 - Discovered some sort of stone fixture on the line of the stylobate at the east end of the square (perhaps a masonry column or a pilaster). The fixture was damaged by the tractor while removing other stones.
 - The soil profile on the north balk indicates that the top 120cm are recent fill from the tractor, especially to the east.
 - From the west pilaster to the first column is 140cm.
 - From the column to the east fixture is 243cm.



- Basket 2314 is from Locus 1299. That locus is the top of the pottery dump. In general, the contents are mainly large pieces of Beisan jars, looking restorable, dating from 500 AD until 749 AD.