

Hippos (Sussita) Excavations 2010 – 11th Season Daily Log + Drawing

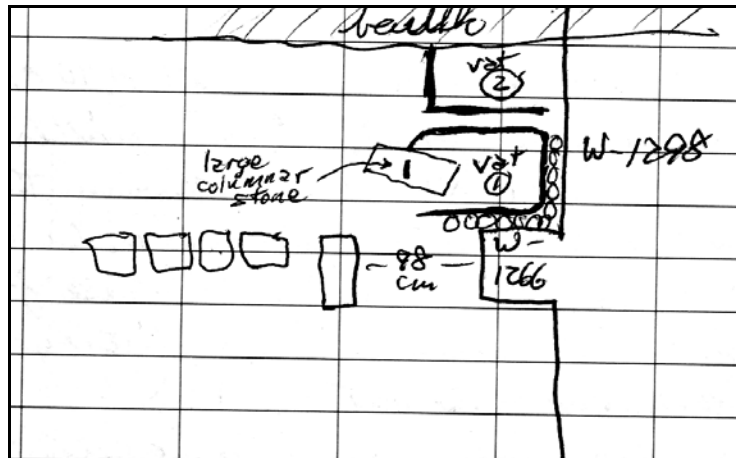
Date: 13 July 10 Area: NEC Manager: Schuler

Squares	XXYY99	YY/ZZ1/2	YY/ZZ4	YYZZ01	
Loci	1226 1905 1907	1226	1906	1226	
Baskets	2335 2336 2340	2338	2339	2337	
Walls	W1261, W1266, W1288, W1236, W1297, W1298, W1902, W1903, W1904				
Floors	F1294				

- Continued work in XXYY99
 - Goal = Searching for intersection between W1266 and north to south wall on west side of putative street.
 - Starting elevation = 131.056
 - Ending elevation = 130.779 (average), 130.230 (south vat), 130.794 (north vat)
 - Soil is Horizon B
 - A second vat was discovered to the north of the first vat. The north vat is 1.80m from east to west. Its sides do not slope as deeply (initially). [NB: we will later clarify that the northern vat is not a vat, but more likely an entrance to the court of the pools.]
 - We did not reach the bottoms of either vat. As the northerly vat is only partially in the square, work is concentrating on the southerly vat. A column seems to have fallen into and damaged the west side of the vat.
 - The southern vat has been cleared to a depth of 110cm. the floor has not been reached but some plaster in the NW corner confirm the presence of a radiused corner. A large column fragment stone lying atop these fragments

suggest that tumbling stones destroyed the western side of the vat. It is blocking further work in the south vat.

- The northern “vat” has been cleared to a depth of 60cm. Most of its southern vertical face is covered with coarse plaster. Only one fragment of the “finished plaster has been found on the southern surface.
- W1298 to the east seem to be not well established.

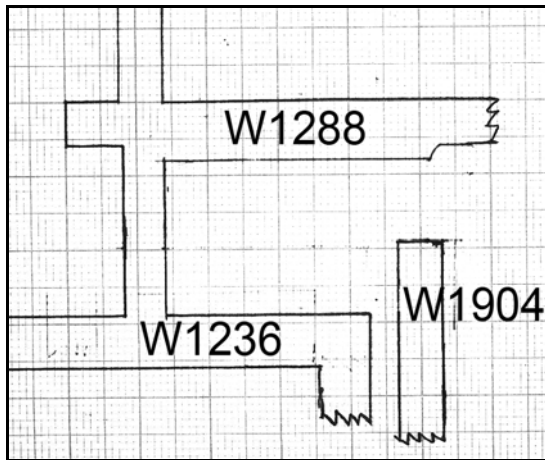


- Basket 2335 is from Locus 1226. That locus is fill below L1219, but above the level of walls. The contents are a few fragments of Beisan jars, dating from 500 AD until 700 AD. Indicative types are CRS. Residual types are 1 HRD lamp (fragment).
- Continued work in Square YY/ZZ1/2
 - Goal = Follow W1261 and south stylobate of paved plaza to the east.
 - Starting elevation = 130.739 (high)
 - Ending elevation = 130.804 (high), 130.043 (stylobate)
 - Soil is Horizon B/C
 - Cleared the western half of the square.
 - A dagger (item # 473) was found on the floor.
 - The stylobate continues to the east to the second column.
 - Loose tesserae continue to be found in some quantities in the NE and SE corners of the square. Cornices continue to be found in some number especially between the second column and the doorway in W1261.

- Basket 2338 is from Locus 1226. That locus is S. part of peristyle court. In general, the contents are large pieces of Beisan jars, dating from 450 AD until 600 AD.
- Item: 455. Description: marble cornice with three grooves and one rib (length 18 cm, width 6.5 cm, height 10 cm) discovered 180 cm north of w1261, 387 cm from east balk, 162 cm from surface.
- Item: 456. Description: marble cornice with two grooves (length 13 cm, width 5 cm, height 13.5 cm) exposed 142 cm north of w1261, 343 cm from east balk, 134 cm from surface.
- Item: 457. Description: marble cornice (length 10 cm, width 3.0 cm, height 6.0 cm) revealed 104 cm north of w1261, 126 cm from east balk, 123 cm from surface.
- Item: 458. Description: bent iron nail (length 5 cm, width 8 mm) retrieved 235 cm north of w1261, 205 cm from east balk, 116 cm from surface.
- Item: 459. Description: Part of a capital with a scroll pattern (length 25cm, width 11 cm, height 20 cm) recovered 282cm north of W1261, 347 cm from east balk, and 129 cm below the surface.
- Item: 461. Description: marble cornice with two grooves, triangular shape, with small hole in back for nail/peg (length 29 cm, width 6.0 cm, height 8.5 cm) revealed 74 cm north of w1261, 367 cm from east balk, 152 cm from surface.
- Item: 462. Description: marble cornice (length 34 cm, width 6.0 cm, height 10 cm), rectangular in shape, revealed 74 cm north of w1261, 367 cm from east balk, 152 cm from surface.
- Item: 463. Description: marble cornice, triangular shape, with one groove and one rib, appears to be carved from honey-colored stone (length 45 cm, width 9.0 cm, height 10 cm) excavated 74 cm north of w1261, 387 cm from east balk, 152 cm from surface.
- Item: 464. Description: marble cornice with one v-shaped groove and one concave groove (length 23 cm, width 6.0 cm, height 9.0 cm) from 57 cm north of w1261, 356 cm from east balk, 148 cm from surface.

- Item: 466. Description: small smoothed stone rounded with one side concave, orange in color, possible black (pattern) on opposite side (diameter 2.0 cm, height 1.5 cm) excavated 170 cm north of w1261, 401 cm from east balk, 173 cm from surface.
- Item: 467. Description: nail fragment (length 4.0 cm, width 0.9 mm) recovered 92 cm north of w1261, 417 cm east of w1267, 180 cm from surface.
- Item: 468. Description: marble cornice with one rib and two grooves slightly bowed (length 23 cm, width 5.0 cm, height 8.5 cm) recovered 52 cm north of w1261, 336 cm from east balk, 158 cm from surface.
- Item: 470. Description: marble cornice with no engravings (length 22.5 cm, width 4.0 cm, height 7.0 cm) discovered 309 cm north of w1261, 328 cm from east balk, 132 cm from surface.
- Item: 471. Description: nail fragment.
- Item: 473. Description: dagger corroded and fragile (length 16.5 cm, remains of tang 1.5 cm, width of tang 15 mm at narrowest / 3.0 cm at widest) retrieved 609 cm east of w1266, 173 cm north of w1261, 170 cm from surface.
- Item: 474. Description: nail, head to bend 8.0 cm, 1st bend to 2nd bend 4.0 cm, 2nd bend to tip 1.0 cm, head 2 cm x 2.5 cm, discovered 12 cm west of eastern door jamb, 600 cm east of w1266, 116 cm from surface.
- Continued work in Square YY/ZZ4
 - Goal = Follow W1288 and W1236 to east and clarify temporal relationship.
 - Starting elevation = 131.355
 - Ending elevation = 131.085
 - Soil is Horizon C
 - Continued to remove fill from inside the room.
 - W1236 sits on top of another wall that continues to the east. Therefore, the Umayyad building was constructed over previous walls.
 - W1904 displays ashlar in line with the south face of W1236. The ashlar form a seam in the wall. The ashlar may be the north side of a doorway.
 - A hoard of small finds was recovered just outside and to the south of the doorway in W1904. It sits on the surface of a crudely built exterior surface (domestic courtyard?). The finds include:

- A bronze pitcher
- 2 glass flasks missing part of their tops. One flask is of significantly thicker glass than the other (0.25cm vs. 0.18cm)
- A dancing Maenad carved in bone
- A broken storage jar (mostly complete)
- A glass ring
- A scarab



- Basket 2339 is from Locus 1906. That locus is a room in square YZZ4. In general, the contents are very large pieces of Beisan jars with some BYZ cooking ware, further pieces of imported AMP from B. 2353, and Late ROM restorable jar (3-4 century AD) in the NW internal corner of W.1904 / W.1917, dating from 350 AD until 600 AD. Indicative types are ARS; CRS. Residual types are ESA.
- Item: 469. Description: a horde of pottery, glass, bronze, and bone including several large pieces of pottery that seem to go together, 2 large rounded bottles and 'v' shaped, flat bottom of glass, a figure carved of bone (dancing maenad). a scarab from a piece of jewelry, a ring, A large bronze pitcher. Recovered 16 cm east of w1904, 17 cm from south line of w1288, 185 cm from surface.
- Continued work in square YZZ0/1
 - Goal = Expose rest of the paved plaza east of the church
 - Starting elevation = 131.200

- Ending elevation = 130.961 (average), 131.064 (wall section in NE corner of square).
- Soil is Horizon B
- Removed heavy destruction fill.
- Protruding 1.6m into the NE corner of the square from the east is a wall/pilaster (?). It aligns north to south with the pilaster in YYZZ1/2.
- No other clear walls are discernable.
- Noticed increased quantities in glass and loose tesserae in southeast quadrant of the square.
- Basket 2337 is from Locus 1226. That locus is below the level of L1219 in square YYZZ1. The contents are a little pottery, dating from 500 AD until 700 AD.
- Item: 460. Description: nail fragment (3.5 cm long, 1.5 cm at widest part, 0.5 cm at narrowest part) retrieved 606 cm east of w1267, 200 cm north of line of zz1, 76 cm from surface.
- Item: 465. Description: iron nail fragment 8.9 cm long with a 1.0 cm wide shank and a head 2.8 cm x 2.8 cm, retrieved 789 cm east of w1267, 185 cm north of (north half of) yy1, 78 cm from the surface.
- Item: 472. Description: piece of a capital triangular in shape (17 cm high, 22 cm x 20 cm x 15 cm wide) from 570 cm east of w1267, 310 cm north of YYZZ1/2, 80 cm from surface.