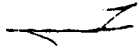
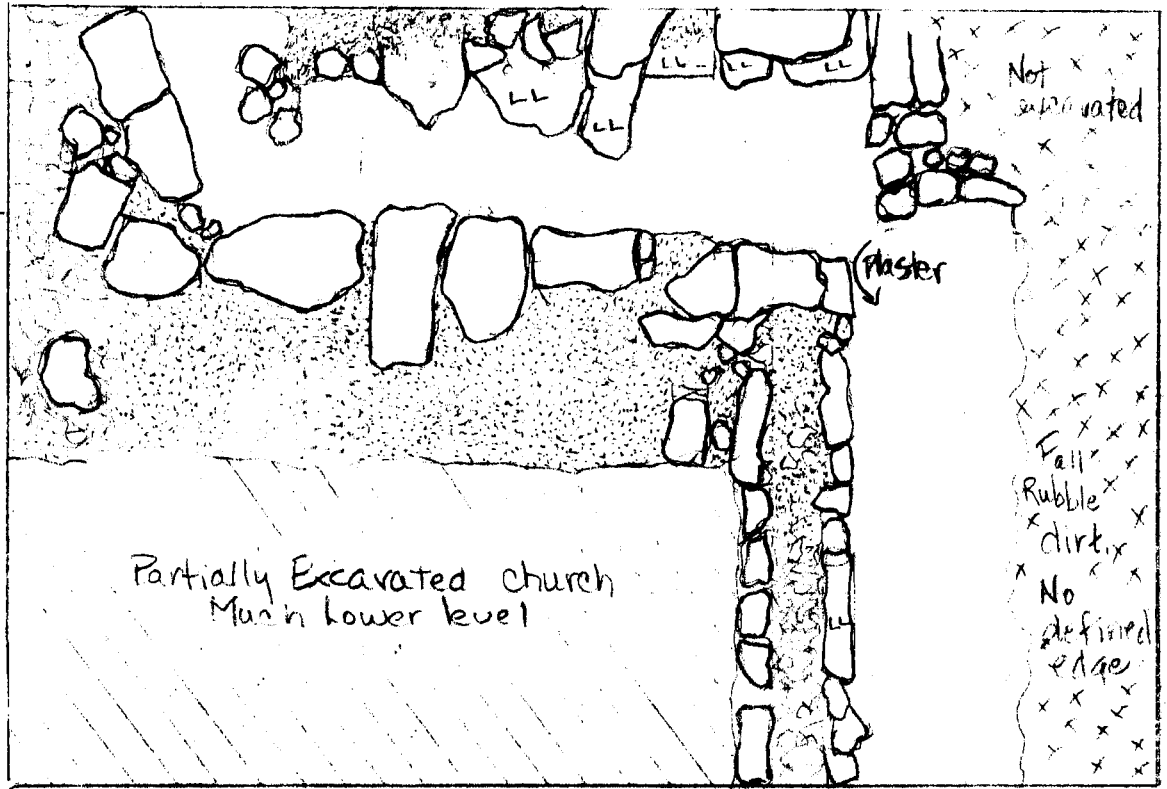







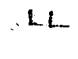
Hippes 02 NEC
 CEC corner
 17 July 02

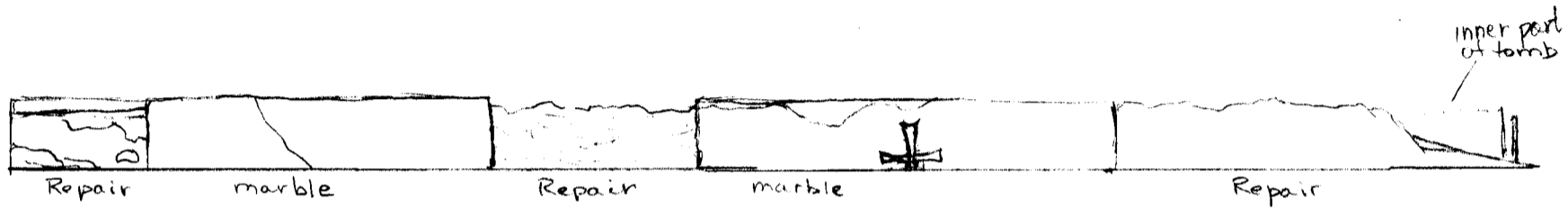


Top of
 Stones
 for a pse



Key:

-  Soil
-  Soil and rocks
-  Partially excavated church, Lower level
-  Trenches to expose wall
-  Not excavated
-  LL Low level



50 cm

SE

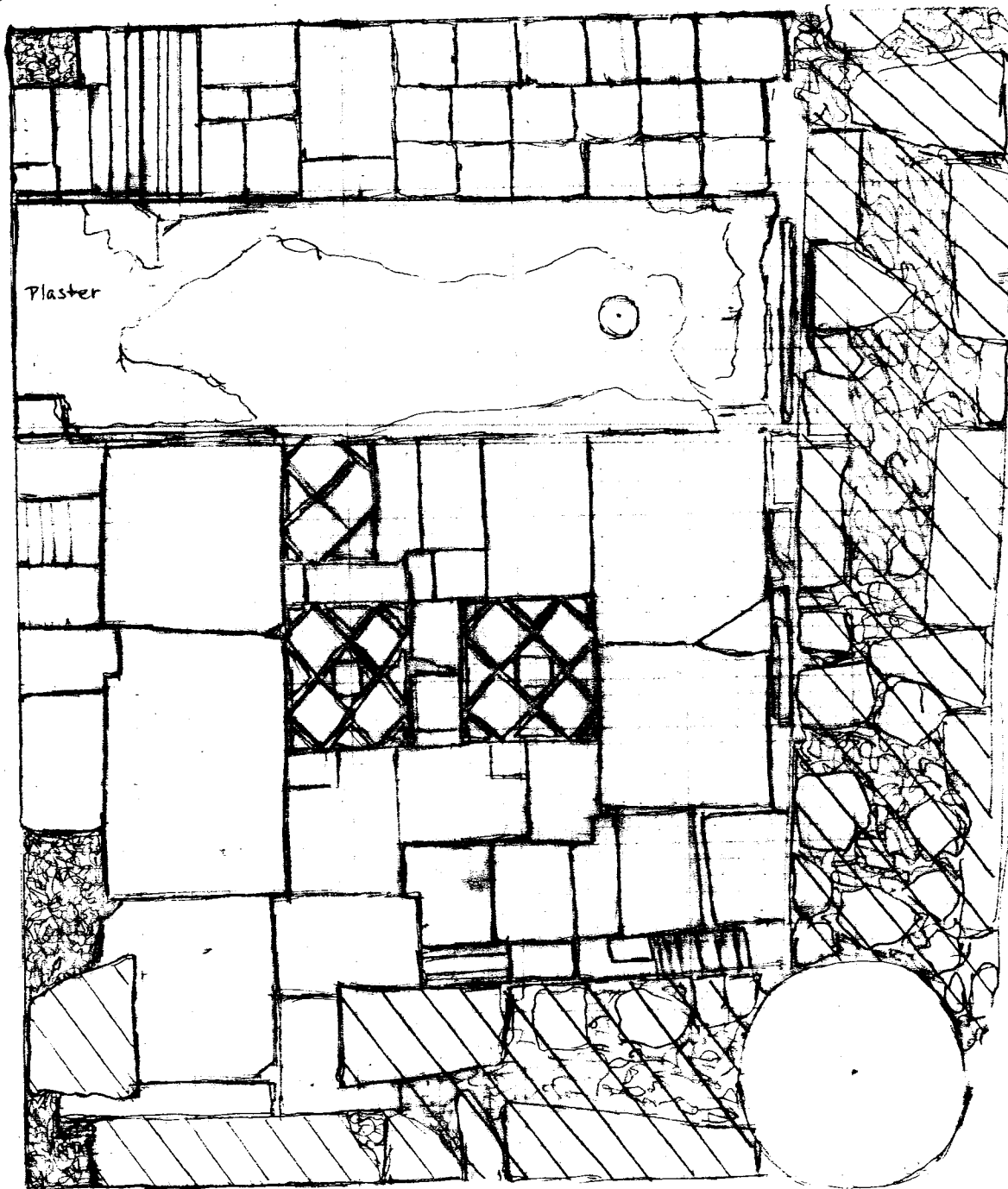


soil



wall

Plaster cover
of tomb is an
approximation

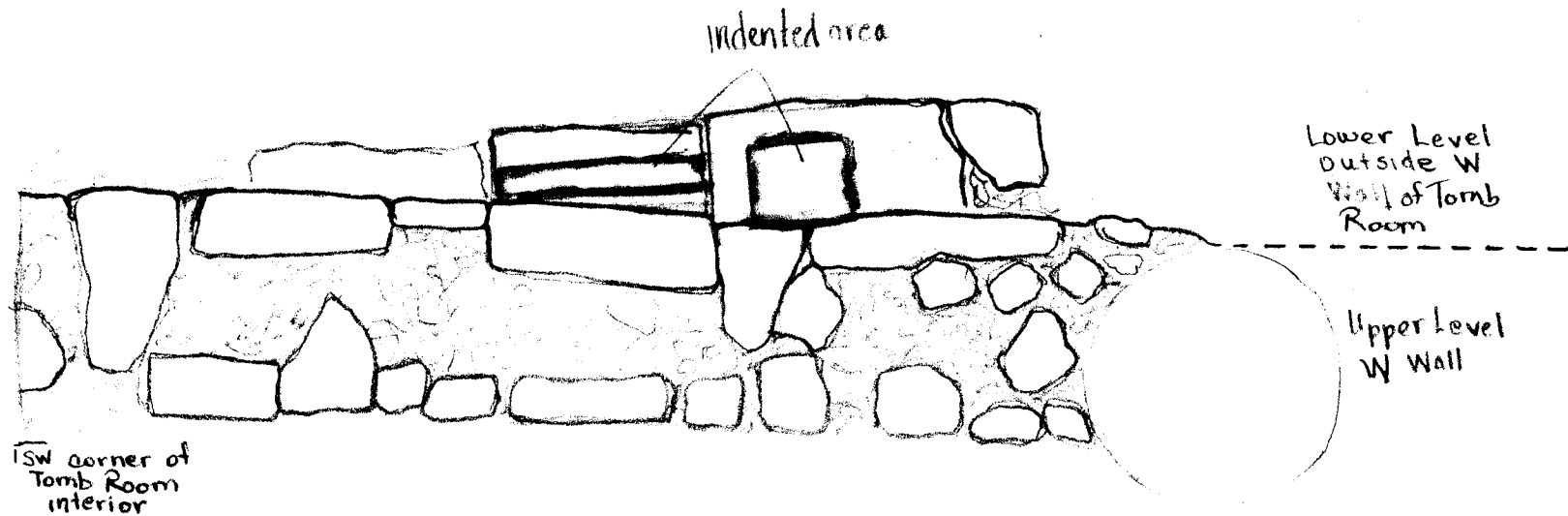


Hippos 02
SEC
L 506
22 July

Tomb Room



1m



Hippos 02
SEL

L 506

22 July

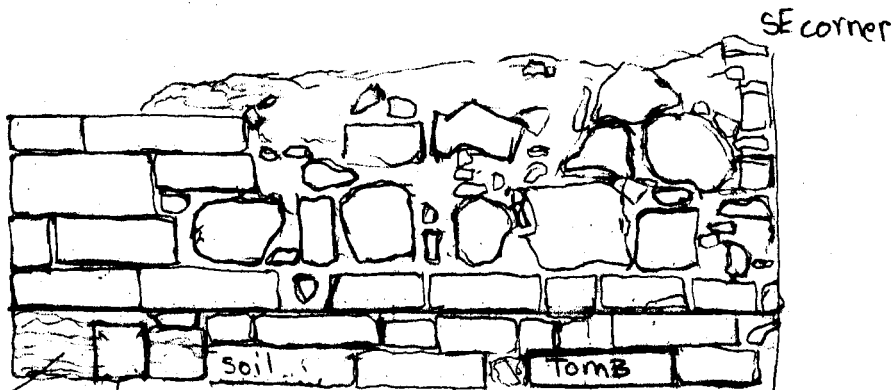
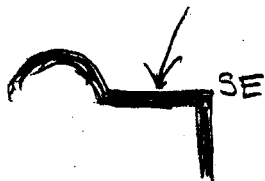
West wall of
Tomb Room

Hippas 02
SEC

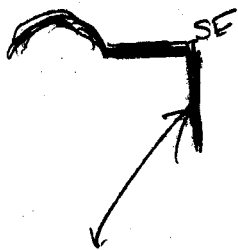
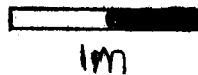
23 July 02

L 506

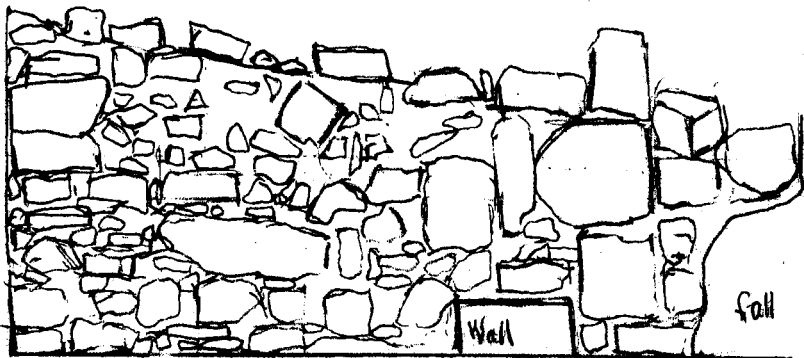
Profile
East Wall of
Tomb Room



Rubble
and fall
Location
of wall
perpendicular
to east wall



Profile
South Wall of
Tomb Room
(close approximation)



to SWall

OS UK

EC

23 July

L 505

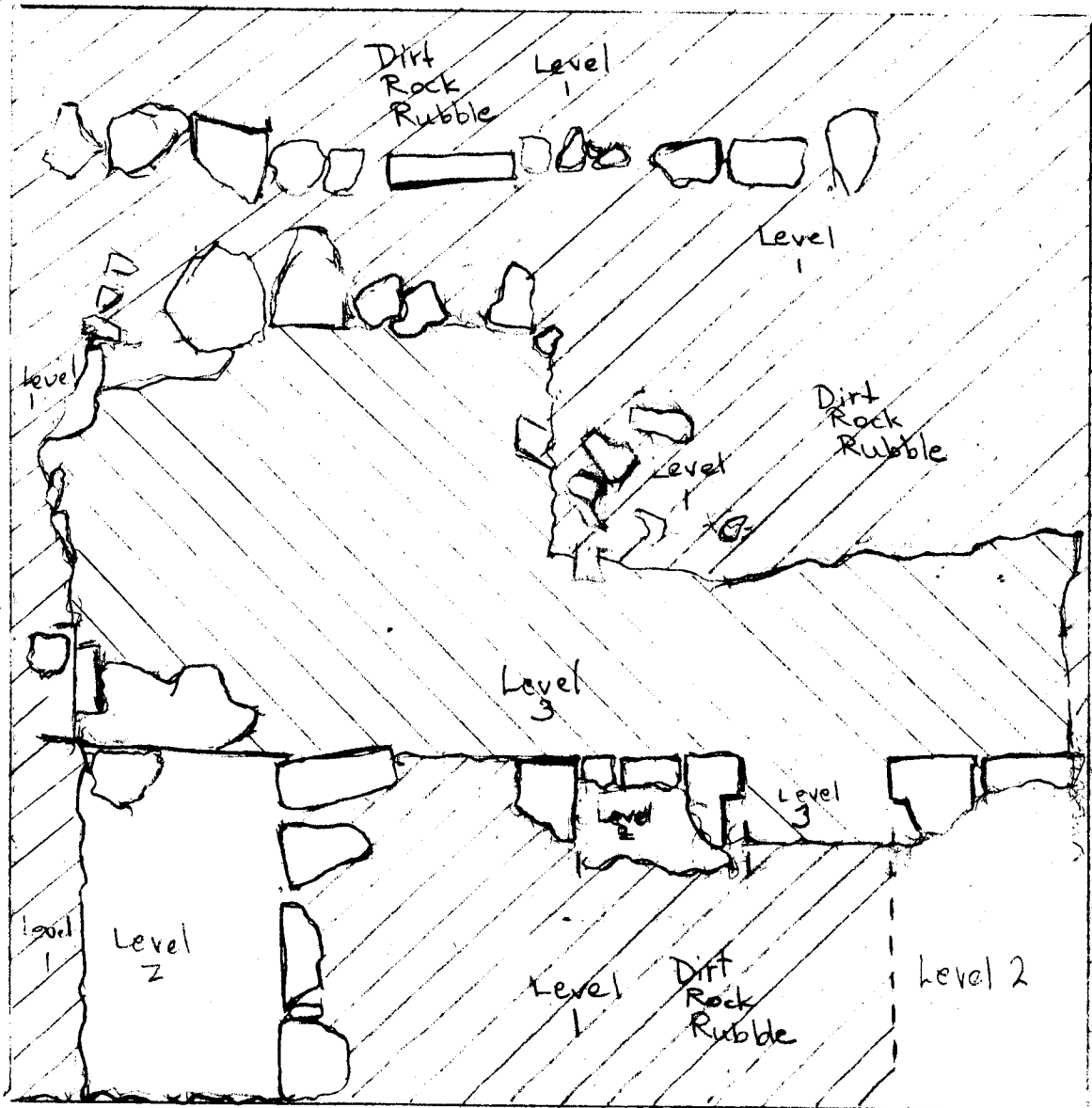
Outer SW Wall
and Corner




Wall parallel
and S of outer
wall.

120

325

SW



-  Level 1 surface
-  Level 2 middle Level
-  Level 3 Current Floor

Surface covered by
dirt, rocks, rubble,
organics

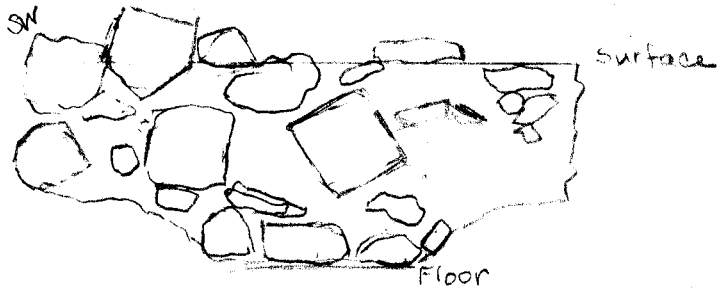


1m

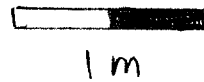
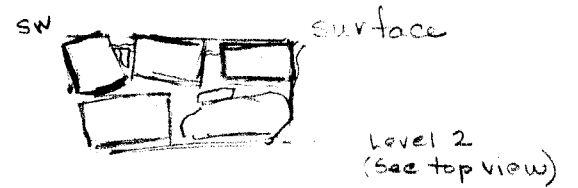
Hippos 02
SEC
23 July 02
L 505

Wall Profiles
SW Corner

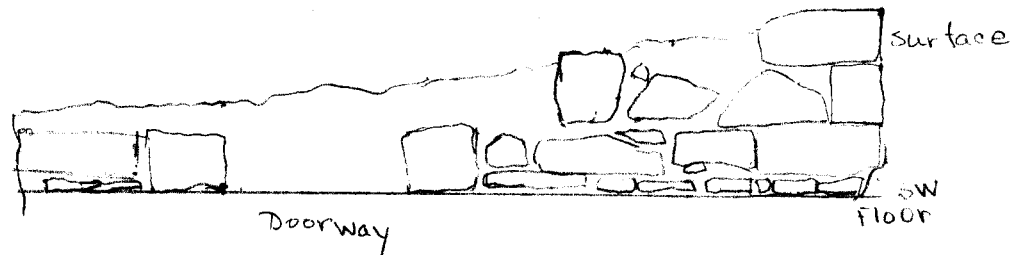
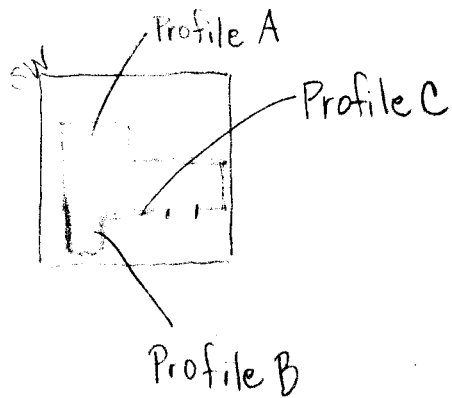
A. Face of westernmost wall.



B. Exterior Wall at SW corner of church.



C. Exterior wall West side of church



HIPPOS 02

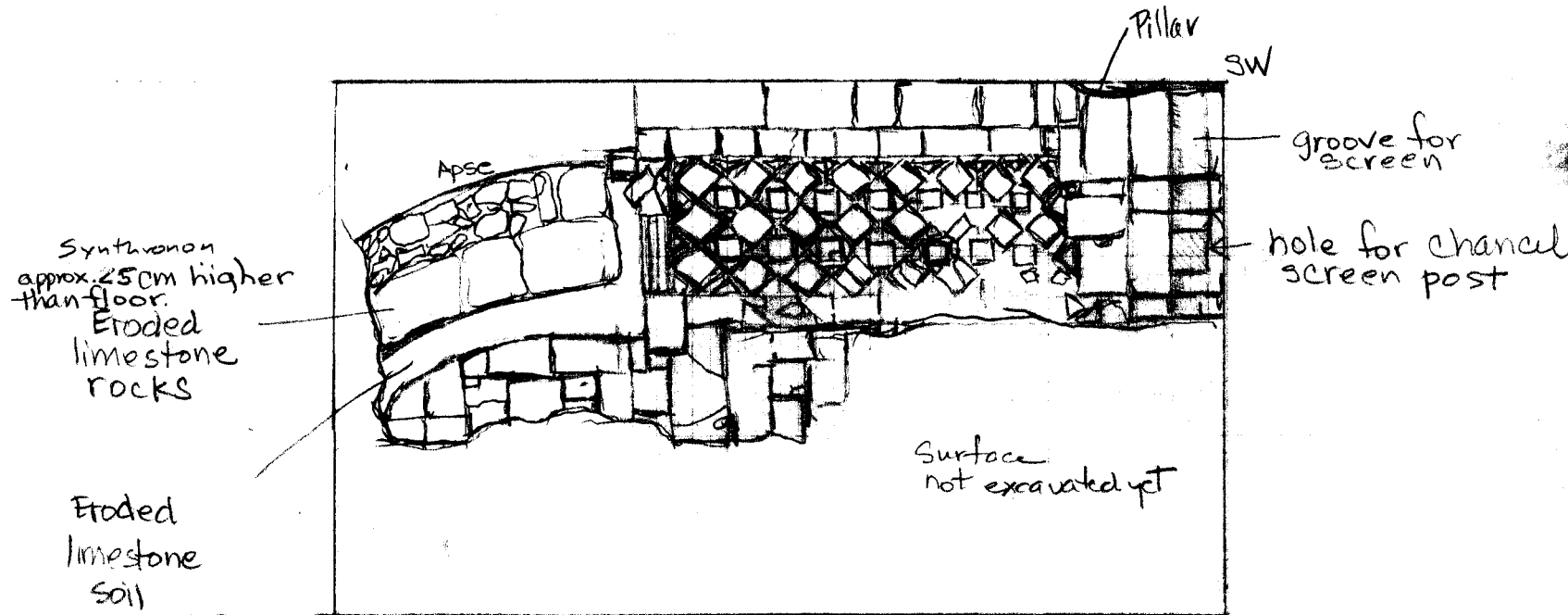
SEC

24 July 02

L 504

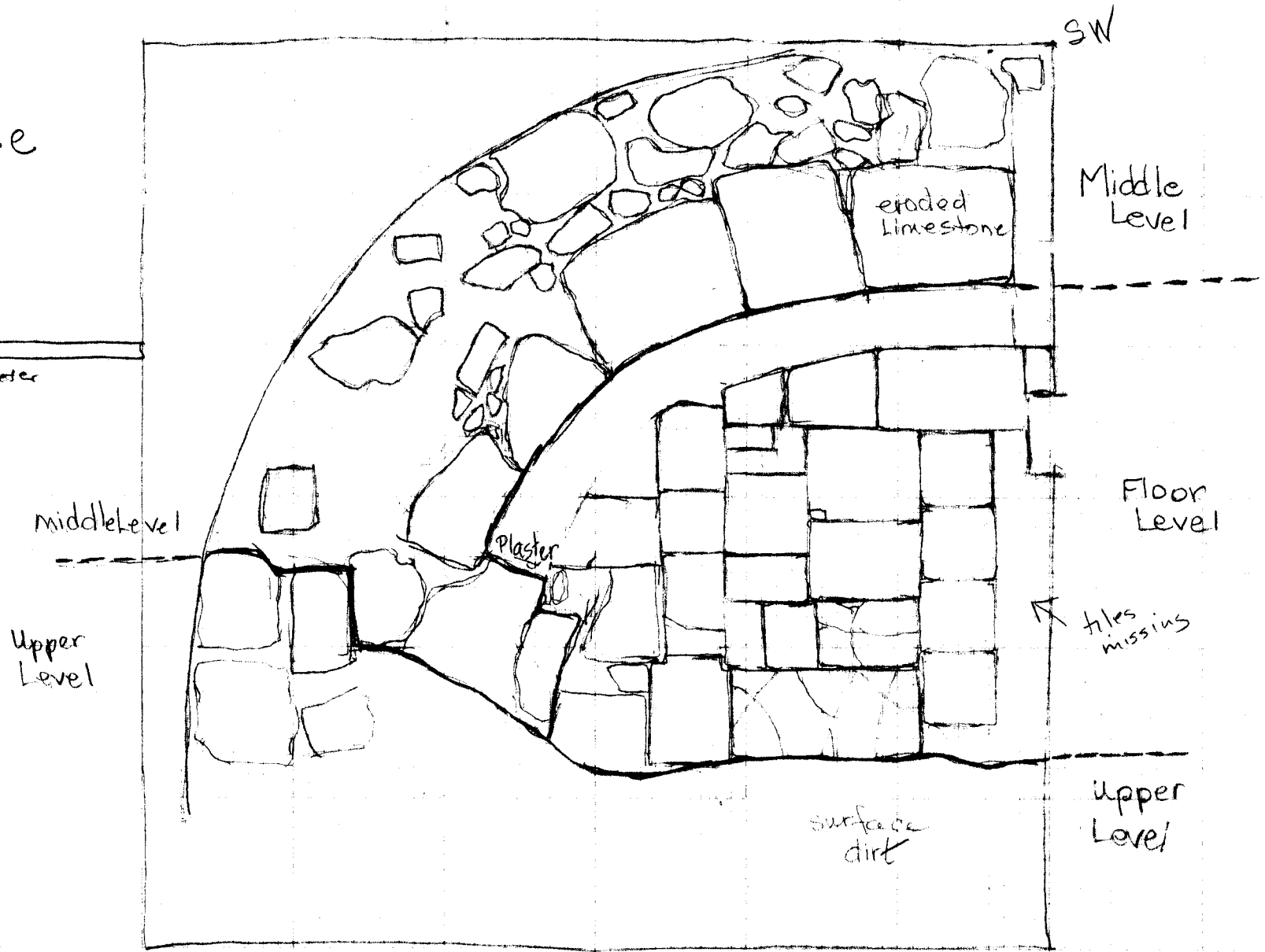
SOUTH SECTION of CHANCEL

Floor



Hippos 02
SEC
25 July 02
L 504
S Side of Apse

1 meter



SW

Middle Level

Floor Level

tiles missing

Upper Level

Middle Level

Upper Level

eroded limestone

plaster

surface dirt